

0~+3 W

POSITIVE TOLERANCE

Positive tolerance of up to SW delivers higher output reliability.

410W

POWER OUTPUT

Monocrystalline Module

4mm² cable 100cm

OUTPUT CABLES

Inlcuding MC4 connector

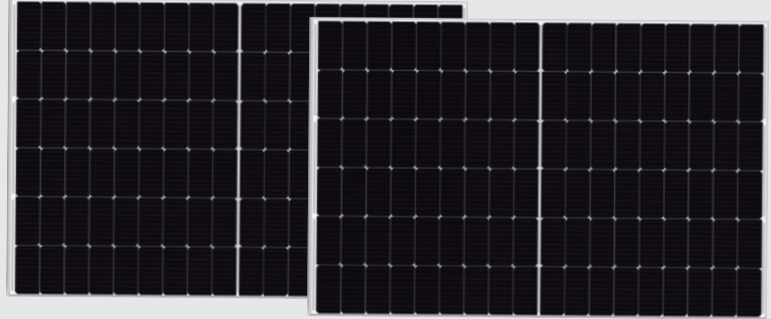
20.97%

MODULE EFFICIENCY

half-cell designs improves the module's performance and durability.

Mono Half Solar Panel

WHITE FRAME

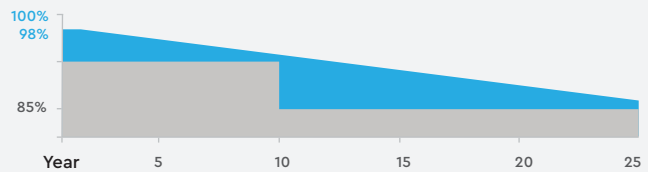


12 YEAR

WARRANTY
PRODUCT MATERIAL AND
WORKMANSHIP

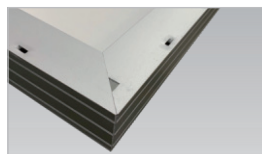
25 YEAR

WARRANTY
LINEAR POWER OUTPUT



JUNCTION BOX

WATERPROOF PROTECTION GRADE:IP67/IP68
SAFETY LEVEL: CLASS II
MAXIMUM SYSTEM VOLTAGE: 1500V
OUTSTANDING WATERPROOF LEVEL,
EFFECTIVELY RESIST HARSH ENVIRONMENTS



FRAME

STRONG MACHINICAL LOAD
RESISTANCE UP TO 5400PA
ANODIC OXIDATION LAYER RESISTANT TO
CHEMICAL CORROSION AVAILABLE
IN SILVER AND BLACK



HALF-CUT TECHNOLOGY

New Circuit Design, Lower Internal Current And Lower Internal Resistance Loss



SIGNIFICANTLY AVOIDING HEAT SPOT

The unique circuit design to reduce the temperature Of heat spot significantly,so that to reduce the power loss And then increase the output of modules.



LOWER COST

Increasing power generation can reduce the cost per kilowatt-hour



EXCELLENT PERFORMANCE OF PID RESISTANCE

The performance of PID resistance(Potential Induced Degradation) passed the standard of TUV Nord.

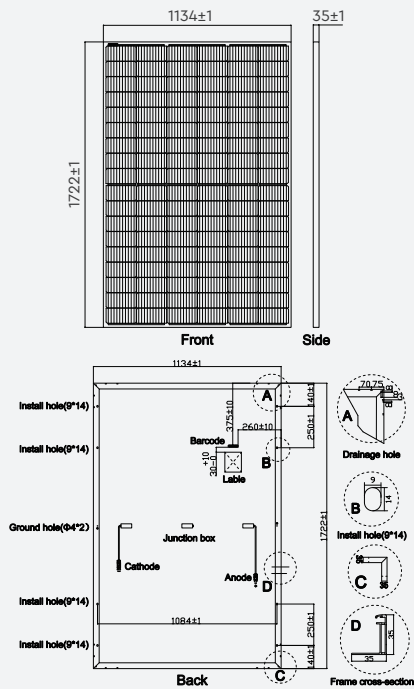


SOLD IN OVER
70 COUNTRIES

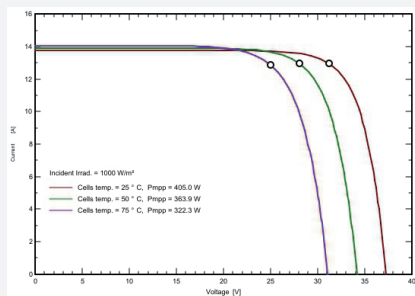
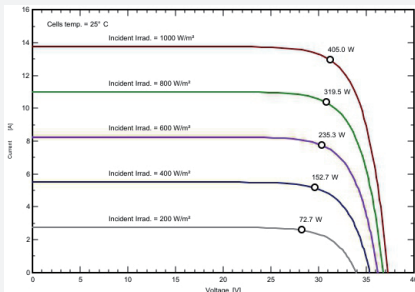
www.vtacexports.com

ONE BRAND, ENDLESS SOLUTIONS.

DRAWING AND DIMENSION CURVE



IV CURVE



ELECTRICAL DATA (STC)

Peak Power(Pmax)	410.00
Maximum Power Voltage(Vmp)	31.46
Maximum Power Current(Imp)	13.04
Open Circuit Voltage(Voc)	37.45±3%
Short Circuit Current(Isc)	13.85±3%
Module Efficiency(%)	20.97

ELECTRICAL DATA (NOCT)

Peak Power(Pmax)	304.8
Maximum Power Voltage(Vmp)	29.20
Maximum Power Current(Imp)	10.44
Open Circuit Voltage(Voc)	35.05±3%
Short Circuit Current(Isc)	11.16±3%

TEMPERATURE & MAXIMUM RATING

Maximum System Voltage (V)	1500 V
Maximum Series Fuse Rating (A)	25A
Power Tolerance	0~+3 W
Pmax Temperature Coefficient (W/°C)	-0.350 %/°C
Voc Temperature Coefficient (V/°C)	-0.285 %/°C
Isc Temperature Coefficient (A/°C)	+0.045 %/°C
NOCT Nominal Operating Cell Temperature (°C)	45±2°C
Operating and Storage Temperature (°C)	-40~+85°C

MECHANICAL CHARACTERISTICS

Cell Type	182*91 Mono
No. of Cells	108 (12*9)
Dimensions	1722*1134*35mm
Weight	21.50kg
Front Glass	3.2mm high transmission, low iron, tempered glass
Frame	Anodized Aluminium Alloy
Junction box	IP67/IP68 3diodes
Output cables	4mm² cable 100cm (Including MC4 connector)
MaxWind Load/Snow Load	2400Pa/5400Pa

LISTING DETAILS

Modle No: VT-410
 SKU Code: 11518
 EAN Code: 3800157693509

MASTER BOX PACKAGING

20ft Container:
6 Packages/186pcs
 40ft Container:
26 Packages/806pcs